



ATIKA INFRASTRUCTURE COMPANY

Presentation

INDEX

- Company Introduction
- Details of Area of Services
- Key Areas of Operation
- Industries We Serve
- Details of Completed Projects
- Current Projects with Photos
- Key Personnel
- Machinery Details
- Company Details

COMPANY INTRODUCTION



Atika Infrastructure Company, is an Associated Company of **EPP Composites Pvt. Ltd.**, situated in Metoda, which is a Global Multi Products, Multi Divisional Company engaged in the field of manufacturing of Fibre Glass Composites and which took the revolutionary step of establishing an in-house R&D Department for innovating and assimilating path-breaking technology in composite products manufacturing.

Atika Infrastructure Company has been initiated by the same Management of EPP Composites Pvt. Ltd as a vision of Continues Development in the field of Infrastructure, with a commitment to deliver continual Progress by adopting New Technologies and Practices for on-time completion of the Projects.

Atika Infrastructure Company has been present in the field of Project Management, Sea Water Pipeline, Sewage Water Pipelines, Pipelines in Chemical Industries, Drinking Water Pipelines, Irrigation Water Pipelines, Civil works, Building & Houses, Power & Electrical, Roads & Bridges, Metal & Mining.

Atika Infrastructure Company has been also present in Total Water Management Company provides End to End Solutions in the field of Water & Environment management to global customers, consultants and OEMs. We offers advanced solutions for all Medium & Large Scale Water & Waste Water Treatment projects. We execute small, medium and large projects for water, waste water and environment management in Industrial, Municipal and Infrastructure segments. We undertake Water & Waste Water Management Projects on Turnkey basis (CONCEPT TO COMMISSIONING) with timely completion is ensured.

VISION:

- ✦ To be the most preferred Company in the field of Infrastructure.

MISSION:

- ✦ To satisfy the Client or Customer by providing quality work through continuous Innovation.
- ✦ Doing Business with Ethics.
- ✦ Fosters Health and well being of Employees.
- ✦ Committed to deliver continual Progress by adopting New Technologies and Practices for on-time completion of the Projects.

VALUES:

- ✦ Atika infrastructure company always sought to be a value-driven Organization with Customer Focus, Innovation, Agility, Integrity, Leadership and Sustainability.
- ✦ Completion of the Projects on hand with Safety on top priority without sacrificing the quality.

KEY AREAS OF OPERATION



Water Supply & Environment



Irrigation System



Electrical Works



Water Treatment Plant, Waste Water / Effluent Treatment Plant, Sewage Treatment Plant, Zero Liquid Discharge System



6/4/2020

KEY AREAS OF OPERATION



Building & Housing



Road & Bridge



Metal Mining



Railways



KEY AREAS OF OPERATION



Infrastructure Industry

- Power Plant
- Oil & Gas, Refinery & Petrochemical
- Iron & Steel
- Cement
- Urban Infrastructure
- SEZs



General Industry

- Food & Beverages
- Chemical & Fertilizers
- Pharmaceuticals
- Textiles
- Breweries & Distilleries
- Automobiles
- Sugar
- Paper & Pulp



Commerical & Residential

- Hospitality
- Hospital
- Institutional
- Residential Colony
- Defense Establishments

KEY AREAS OF OPERATION



Municipal Segment

- Municipal Corporation
- Municipality & Grampanchayat
- Irrigation Department (Piping Projects)
- Water Supply Board
- Jal Board / PWD



Railway Industry

- Indian Railways
- Metro Railways

IRRIGATION, WATER & ENVIRONMENT

Atika Infrastructure Company has been present in Total Water Management Company provides End to End Solutions in the field of Water & Environment management to global customers, consultants and OEMs. We offers advanced solutions for small, medium and large projects for water, waste water and environment management in Industrial, Municipal and Infrastructure segments. We undertake Head works to distribution system comprising of Canals, irrigation system, pumping stations, storage reservoir, WTP, STP, ETP, pipeline works, Sewage Water Pipelines, Pipelines in Chemical Industries, Drinking Water Pipelines, Irrigation Water Pipelines and associated Civil works.

- Water supply projects for drinking water, comprising of water pipeline laying
- Water treatment plants
- Distribution networks
- Pumping stations
- River intake works
- Electro-mechanical works
- Underground drainage networks
- Lift irrigation schemes
- Sewage pumping stations and Treatment plants
- Overhead / Underground Storage Tank
- Ponds & Reservoir
- Canals

ROAD & BRIDGE

Atika infrastructure company, are the preferred contractor for services like excavation, leveling, road construction and alignment, widening and strengthening. We have an complete range of construction equipment required to execute most complex construction task.

- Highways
- Highway realignment and Bypass
- RCC Roads for private society.
- Carriageway widening and strengthening
- Road sections' rehabilitation and up gradation
- Bridges & Flyovers

METAL & MINING

Atika infrastructure company provides high end engineering service for all types of mining activities in the field of Coal mines, Copper mines, Iron mines, Coal mines, Lignite mines which involves planning, Development & Production, transportation of ore/coal.

- Engineering, Procurement & Construction
- Metals (EPC) projects in the metals industry
- Ferrous and non-ferrous mining projects in public & private sectors
- Removal of Overburden and Bulk Material Handling Technologies
- Extraction of Coal / Lignite / other Minerals from Open Cast Mines
- Transportation of Coal

BUILDING & HOUSING

Atika infrastructure company execute the Industrial and commercial building works inclusive of government quarters, schools, hospitals etc.

- Industrial Building
- Commercial Building
- Housing Projects
- Hospitals

POWER & ELECTRICAL

Atika infrastructure company provides EPC projects in the field of Transmission system, distribution system, sub-station, installations of various electrical equipment's. We have several long-term and established performance partnerships with a variety of clients to perform distribution line construction and maintenance services.

- Design, engineering, erection, testing and commissioning of transmission lines and sub-stations.
- Projects electrification
- Distribution projects in various utilities.
- EPC Works

RAILWAYS

Providing of innovative insulating cover, to reduce the risk of electric shock hazard and GRP Shroud Box & Assembly, Lamp Post, Epoxy Moulding Slot Wedges etc. Development of the product carries three decades of knowledge of EPP Composites in perfect design and solutions keeping high quality technical standard needed by approving authority and stringent quality test during inspection. Client and EPP Composites aimed at highest safety of the product for commuters.

- Indian Railways
- Metro Rail Projects

Water Treatment Plant Manufacturers, Suppliers & Exporters

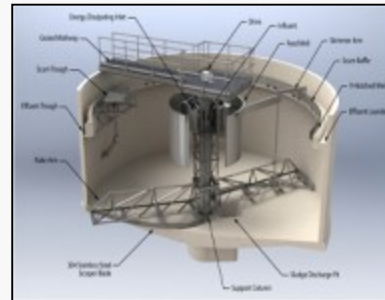
Filtration & Clarification

- Bar Screen & Grit Separator
- Oil skimmer
- Pressure Sand Filter
- Activated Carbon Filter
- Iron Removal Filter
- Side stream filter
- Dissolved Air Flotation
- Gravity Sand Filter
- Circular Clarifier
- High Rate Solid Contact Clarifier
- Lamella Clarifier
- Tube settler
- Dosing System
- Flash Mixer
- Clari-flocculators



Filters

- Dual media Filter
- Activated Carbon Filter
- Garnet Filter
- Pressure sand Filter
- Side Stream Filter
- Gravity Sand Filter



Clarifier

- Circular Clarifier
- Clariflocculators
- Lamella Clarifier
- Flash Mixer
- High Rate Solid Clarifier

Water Treatment

- Softeners
- Ultra Filtration
- Reverse Osmosis Plant
 - Brackish Water Reverse osmosis (BWRO)
 - Sea Water Reverse Osmosis (SWRO)
- Boiler Feed Water
- DM Plant & Mixed Bed
- Degasser
- EDI
- Seawater intake & outfall system



Resin Based System

- Softeners
- DM Plant
- Mixed Bed Unit



Waste Water Treatment Plants

Industrial waste water is one of major sources of pollution that harms our environment badly. During last few years, India has been developing largely in manufacturing sector and waste water too. The bad part is that waste water is released into rivers or coastal areas by manufacturers. As a result, final drinking water got polluted with variety of toxins inside it. Here, it becomes necessary to opt for waste water effluent treatment plant solutions that can mineralize the water.

Bringing more than 30 years of experience in the industry, we have best infrastructure facilities at our plant to give most effective solutions to clients. We are also able to give customized solutions to our clients as needed by our clients to fulfill their unique industry demands.

Technologies We Offer For Water Water Treatment Plant

- Physico-Chemical Treatment
- Biological Treatments
 - Moving Bed Bio Reactors (MBBR)
 - Membrane Bio Reactors (MBR)
 - Sequencing Batch Reactors (SBR)
 - Conventional Activated Sludge system (ASP)
- Recycle & Reuse - Membrane Based System
- Zero Liquid Discharge System



Recycle & Reuse - Membrane Based System



Common Effluent Treatment



Biological Treatment

- Activated Sludge Process
- MBR
- MBBR / FBBR
- SBR

Sewage Treatment Plant

Promising sewage treatment solutions at most affordable prices

We are able to deliver most successful range of sewage treatment plant solutions to suit variegated industrial needs and demands. Our exclusive range of products is offered to clients after careful research and observations only. We make sure that no limitations are left that any conventional sewage treatment plant could have.

We are able to give efficient STP solutions to various industries like hotels, resorts, manufacturing plants, factories, hospitals, urban townships or housing complex etc. We are most trusted manufacturers in the industry offer after sales services to clients. We are working with the single objective to achieve maximum client satisfaction since the time of our inception.

In global market, manufacturers have to face lots of challenges daily. We are able to overcome all the problems with great intelligence and maximum diligence. We strongly believe in giving most enriched services to our clients at industry leading prices. Our products are not only popular in India but they are used worldwide.

Our STP solutions are completely tailored to specific customer needs and requirements to fulfill their unique demands. Further, we use modern tools and techniques to give precisely engineered solutions to our clients. The best part is that our expert staff is working continuously on client's problem to give best industry solutions.

To know more about our products and to get custom solutions for the same, contact our expert team right away.

Technologies for Sewage Treatment Plant

- Activated Sludge Process
- Membrane Bio Reactor (MBR)
- Moving Bed Bio Reactor (MBBR) / Fluidized Bed Bio Reactor (FBBR)
- Sequencing Batch Reactors (SBR)



Packaged STP

Zero Liquid Discharge System

Regulatory norms are becoming stringent concerning the limits of liquid discharge & Wastewater treatment. To reduce impact on the environment, increasing number of industries are going in for Zero Liquid Discharge (ZLD). A Zero Liquid Discharge (ZLD) system implies that practically no liquid waste goes outside the boundary of the manufacturing facility.

We has developed a process for treatment of industrial effluent with economical operation and Zero Liquid Discharge to meet the stringent pollution control norms. Depending upon the type of effluent, various processes have been developed for the cost effective treatment of effluent. The technological solution is provided after complete research.

Our Offerings

- Mechanical Vapor Re-compression (MVR)
- Multiple Effect Evaporators (MEE)
- Thermal Vapor Recompression (TVR)
- Agitated Thin Film Dryers (ATFD)
- Falling Film Evaporators
- Forced Circulation Evaporators
- Ammonia strippers / Scrubbers
- Solvent Scrubber
- Pusher Centrifuges

Industries We Serve

Textile Industries

Distilleries

Pharmaceutical Industries

Chemical Industries

Paper Industries

Dye & Dye Intermediaries

Edible Oil Refineries

Electroplating Industries

Tannery Industries

Advantages of Technology

- Totally integrated zero discharge system.
- By Product is marketable commodity in most of the cases.
- Complete use of condensate water.
- Compact plant requires very less space.
- No Scaling & Froth formation in evaporator.
- User friendly plant.

Key Features

- Fully Customized Designed System.
- Highest Steam Economy.
- Lowest Operation & Maintenance Cost.
- Operator Friendly
- Easily Upgradeable.
- Applicable for CDM Benefit.
- Technology approved by CPCB. (Central Pollution Control Board)

COMPLETED PROJECTS



1. Gagva- Phase-I, A2O Project-CCPL- RIL Jamnagar

Design, Engineering, Manufacturing, Testing & Supply of GRP Pipes, Laying, Hydro Testing Including civil work and all utility crossings. – Dia: 500 mm to 200 mm-24 Kilometer (Each 8.0 km).

2. Water Pipe Line for TWAD board- Tamilnadu

Design, Supply, Excavation, laying, joining, testing of various diameter water supply pipe lines including all kind of civil work.- 300 – 700 mm dia: 34 KM.

3. BADDI Industrial Association effluent water collection system at BADDI – HIMACHAL PRADESH

Design, Supply, Excavation, laying, joining, testing of various diameter ETP pipe lines including all kind of civil work- Dia – 80 mm to 600 mm- 68 KM

4. (1*250 MW Unit – 08) Trombay Thermal Generating Station Suction & discharge piping of FGD scrubber, Tata Power Ltd.:

Design, Engineering, Supply, laying, joining, testing of various diameter pipe lines (Civil Work excluded) - . Dia – 1600 mm , 1000 mm , 750 mm - 270 meter.

5. 5 x 270 MW Thermal Power Plant at Amravathi and Sinnar SEZ, Nasik- India Bull Power Plant

Supply and laying of GRP Pipes of different Dia- Total length- 9306 metres- (Dia. 25 mm-2000 m, 50 mm - 1000 m, 65 mm -2500 m. 200 mm -29 m , 350 mm -471 m, 400 mm -800 m, 500 mm -63 m, 600 mm -119 m, 800 mm -964 m ,1200 mm-1360 m.

6. Reliance Power- Pokhran.

Design, Engineering, Manufacturing, Testing & Supply of GRP Pipes including Laying, Hydro Testing Including civil work and all utility crossings. Dia- 500 mm and 300 mm- 29.10 KM.

COMPLETED PROJECTS



7. Shri Bajrang Power Corporation Ltd., MP- Water Transport cross country pipeline from River to Power Plant.

Design, Engineering, Manufacturing, Testing & Supply of GRP Pipes including supervision of Laying and Civil works Dia- 600 mm dia- 25 KM.

8. Coastal Energy Pvt. Ltd, Tuticorin, Mellamarudhur, TM

Design, Engineering, Supply & Supervision during Erection: Dia- 2600 mm/ 2100 mm/ 1800 mm/ 1650 mm/ 1500 mm/ 1200 mm/ 800 mm- Total Length: 1766 M.

9. Reliance Industries Limited, Jamnagar.

Design, Engineering, Manufacturing, Testing & Supply of GRP Pipes including Laying, Hydro Testing Including civil work and all utility crossings. Dia- 500 mm and 200 mm- 24.00 KM.

10. Reliance Industries Limited, Jamnagar.

Design, Engineering, Testing & Supply, installation, erection and commissioning of PSTP- 30 KLD Capacity for Water Treatment Facility Project Phase-I, Gagva, Jamnagar.

11. Kolkata Metro Rail Project.

Third rail (also known as live rail) with 750 V power supply for Kolkata Metro Rail needed innovative insulating cover for its new section, to reduce the risk of electric shock hazard and GRP Shroud Box & Assembly, developed by EPP was installed for 8.5km stretch successfully.

12. Delhi Metro Rail Corporation Project

Supply of 4.7 mtr Long GRP Pole and 6.5 mtr Long GRP Pole with Galvanized Hinged base plate assembly with cylinder & Chain arrangement

DETAILS OF COMPLETED PROJECTS



Project: Gagwa – Phase - I, A2O Project - CCPL
Company Name : Reliance Industries Limited

location	Jamnagar, From RIL Refinery to Gagwa Plant	
Scope of EPP:	Design, Engineering, Manufacturing, Testing & Supply of GRP Pipes, Laying, Hydro Testing Including civil work and all utility crossings. – 24 Kilometer (Each 8.0 km)	
PO no & Date	1J/XM4/7541615 Dt.29-05-2014	
project value in	368 Cr	
Application:	BRAIN WATER, SEA WATER & FRESH WATER	
Working pressure	10.5 Kg/cm ²	
Type of project:	CROSS COUNTRY PIPELINE	
Demanded standards / specifications / approvals:	AWWA M 45 / AWWA C 950	



chosen pipe system:	GRP wound filament
Why our product?	light weight corrosion resistance flow characteristics mech. Properties high product life; fast and easy installation; economical; variable system/material; less maintenance as result of self cleaning effect

DETAILS OF COMPLETED PROJECTS



Consultant / engineer:	DCPL MUMBAI
Contractor:	EPP
Pipe Details - material:	GRP
Total pipeline length (m):	24 K.M.
Diameter DN min / max (mm):	500 & 200 MM Dia
Pressure PN min / max (bar):	PN – 20,PN- 16 Class
Stiffness SN min / max (N/m ²):	SN – 248 Kpa – C
Joint types:	Butt & Wrap
Fittings used:	Bends, Flanges etc
Installation Details:	
Ground Application	Under ground & above ground
Burial Depth	2000mm.
Project duration:	2014 – 2015 – (09 month)



DETAILS OF COMPLETED PROJECTS



Project : Water Pipe Line for TWAD board- Tamilnadu.
Company Name: Su Toll Road Projects Ltd.

location	Salem					
Scope of EPP:	Design, Supply, Excavation, laying, joining, testing of various diameter water supply pipe lines including all kind of civil work.					
PO no & Date	SUTROL/WO/TWAD/M AIN/09/01 dT. 28-08-2009					
project value in	10 cr					
Application:						
Working pressure	PN - 6					
Type of project:	Cross CPL					
demanded standards / specifications / approvals:	IS 12709					
		<table border="1"> <tr> <td>chosen pipe system:</td> <td>GRP wound filament</td> </tr> <tr> <td>Why our product?</td> <td>light weight corrosion resistance flow characteristics mech. propertieshigh product life; fast and easy installation; economical; variable system/material; less maintenance as result of self cleaning effect</td> </tr> </table>	chosen pipe system:	GRP wound filament	Why our product?	light weight corrosion resistance flow characteristics mech. propertieshigh product life; fast and easy installation; economical; variable system/material; less maintenance as result of self cleaning effect
chosen pipe system:	GRP wound filament					
Why our product?	light weight corrosion resistance flow characteristics mech. propertieshigh product life; fast and easy installation; economical; variable system/material; less maintenance as result of self cleaning effect					

6/4/2020

DETAILS OF COMPLETED PROJECTS



consultant / engineer:	
contractor:	EPP Composite P. Ltd.
Pipe Details - material:	
Total pipeline length (m):	34 KM
Diameter DN min / max (mm):	300 – 700 mm dia
Pressure PN min / max (bar):	PN – 10
Stiffness SN min / max (N/m ²):	SN – 248 Kpa – C Class
joint types:	Coupler Joint with Reka Ring
fittings used:	Bend /Tee/ Flanges
Installation Details:	
type:	
Ground Application	Below Ground
Burial Depth	1 M
Project duration:	2011– 2013 – (2.5 Years)

DETAILS OF COMPLETED PROJECTS



Project : BADDI Industrial Association effluent water collection system at BADDI – HIMACHAL PRADESH.
 Company Name : UPLEEL – VADODARA

location	Himachal Pradesh	
Scope of EPP:	Design, Supply, Excavation, laying, joining, testing of various diameter ETP pipe lines including all kind of civil work.	
PO no & Date	4500006513	 <p style="text-align: center;">Parallel to road Installation</p>
project value in	18 Cr	
Application:	Effluent Conveyance pipe line	
Working pressure	24 Kg/cm ²	
Type of project:	Effluent Conveyance pipe line	
demanded standards / specifications / approvals:	AWWA C 950 / AWWA M 45	
 <p style="text-align: center;">Inside the SSTP</p>		
<i>chosen pipe system:</i>	GRP wound filament	
<i>why our product?</i>	light weight corrosion resistance flow characteristics mech. properties high product life; fast and easy installation; economical; variable system/material; less maintenance as result of self cleaning effect	

6/4/2020

DETAILS OF COMPLETED PROJECTS



consultant / engineer:	
contractor:	EPP Composite Pvt Ltd
Pipe Details - material: GRP	
Total pipeline length (m):	68 Kilometer
Diameter DN min / max (mm):	Dia – 80 mm to 600 mm
Pressure PN min / max (bar):	PN – 15
Stiffness SN min / max (N/m2):	SN – 248 Kpa – C Class
joint types:	Lamination Joint
fittings used:	Flange/Reducer/Bends/Tees
Installation Details:	
type:	
Ground Application	UNDERGROUND
Burial Depth	1200mm.
Project duration:	2012– 2014– (2 Years)



DETAILS OF COMPLETED PROJECTS

Project : 1 * 250 MW Unit – 08 Trombay Thermal Generating Station Suction & discharge piping of FGD scrubber, Tata Power Ltd.

Company Name: Gammon India Limited

location	Trombay, Mumbai	
Scope of EPP:	Design, Engineering, Supply, laying, joining, testing of various diameter pipe lines (Civil Work excluded)	
PO no & Date		
project value in	2 cr	
Application:	Sea water	
Working pressure	PN-7	
Type of project:	Thermal Power Project	
demanded standards / specifications / approvals:	AWWA M45 & AWWA C 950	
	<i>chosen pipe system:</i>	
	<i>why our product?</i>	light weight corrosion resistance flow characteristics mech. properties high product life; fast and easy installation; economical; variable system/material; less maintenance as result of self cleaning effect

DETAILS OF COMPLETED PROJECTS

consultant / engineer:	
contractor:	EPP composite P. Ltd.
Pipe Details - material: GRP	
Total pipeline length (m):	270 meter
Diameter DN min / max (mm):	Dia – 1600 mm , 1000 mm , 750 mm
Pressure PN min / max (bar):	PN – 9
Stiffness SN min / max (N/m2):	SN – 248 Kpa – C Class
joint types:	Lamination Joint
fittings used:	Yes
Installation Details:	
type:	
Ground Application	Under Ground & Above Ground
Burial Depth	1.5 M
Project duration:	2013– 2014– (4 month)



DETAILS OF COMPLETED PROJECTS

Project : Supply of GRP Pipes for 5 * 270 MW Thermal Power Plant at Amravati and Sinnar SEZ ,Nasik - India Bull Power Plant

Company Name: Technofab Engineering Ltd

location	At Nasik and Amravati
Scope of EPP:	Supply of GRP Pipes for 5 * 270 MW Thermal Power Plant (Maharashtra)
PO no & Date	ground
project value in	6.68 Cr
Application:	RAW WATER & FILTER WATER
Working pressure	5 / 6 Kg/cm ²
Type of project:	Raw Water Intake
demanded standards / specifications / approvals:	AWWA M45 & AWWA C 950



chosen pipe system:

GRP wound filament

why our product?

light weight corrosion resistance
 flow characteristics mech.
 properties high product life; fast
 and easy installation; economical;
 variable system/material; less
 maintenance as result of self
 cleaning effect

DETAILS OF COMPLETED PROJECTS

consultant / engineer:	INDIA BULL POWER LTD.
contractor:	EPP COMPOSITE PVT. LTD.
Pipe Details - material: FRP (ISO)	
Total pipeline length (m):	Dia. 25 mm->2000 m, 50 mm -> 1000 m, 65 mm ->2500 m. 200 mm ->29 m , 350 mm ->471 m, 400 mm ->800 m, 500 mm ->63 m, 600 mm ->119 m, 800 mm ->964 m ,1200 mm->1360 m
Diameter DN min / max (mm):	
Pressure PN min / max (bar):	Dia. 200 mm. & Dia. 400 mm. : PN 10 kg/cm ² and PN 15 Kg/cm ² Rest all other Dia : PN 10 Kg/cm ² Coupler type for Below Ground & Butt & Wrap fro above ground
Stiffness SN min / max (N/m²):	
joint types:	Coupler type for Below Ground & Butt & Wrap fro above ground
fittings used:	Bend/Flange/Tee/Reducer
Installation Details:	
type:	
Ground Application	ABOVE GROUND & UNDER GROUND
Burial Depth	1.5 M
Project duration:	2011



DETAILS OF COMPLETED PROJECTS



Project : Reliance Power, Pokhran
Company Name: Zuberi Engineering Company

location	Pokharan, Rajasthan	
Scope of EPP:	Design, Engineering, Supply & Supervision during Erection	
PO no & Date	-	
project value in	7 cr	
Application:	Raw Water	
Working pressure	N/A	
Type of project:	Cross country pipe line	
demanded standards / specifications / approvals:	AWWA C950	



6/4/2020

<i>chosen pipe system:</i>	GRP wound filament
<i>why our product?</i>	light weight corrosion resistance flow characteristics mech. properties high product life; fast and easy installation; economical; variable system/material; less maintenance as result of self cleaning effect

DETAILS OF COMPLETED PROJECTS

consultant / engineer:	
contractor:	Zuberi
Pipe Details - material:	
Total pipeline length (m):	29100m300/500mm
Diameter DN min / max (mm):	
Pressure PN min / max (bar):	SN C
Stiffness SN min / max (N/m2):	
joint types:	Bell & Spigot with Reka Ring
fittings used:	Bend/ Flange
Installation Details:	
type:	
Ground Application	Below Ground
Burial Depth	1.5m
Project duration:	2012- 2013



DETAILS OF COMPLETED PROJECTS



Project : Water Transport from River to Power Plant – Cross Country Pipeline
Company Name: Shri Bajarang Power Cooperation Ltd.

Scope of EPP:	Design, Engineering, Supply & Supervision during Erection	
PO no & Date	SBPIL/TLD/LOI/11-12/12	
project value in	6.8 Cr	
Application:	RAW WATER	
Working pressure	PN 12	
Type of project:	Intake line	
demanded standards / specifications / approvals:	AWWA M 45	
project value		

	<i>chosen pipe system:</i>	GRP wound filament
	<i>why our product?</i>	light weight corrosion resistance flow characteristics mech. properties high product life; fast and easy installation; economical; variable system/material; less maintenance as result of self cleaning effect



DETAILS OF COMPLETED PROJECTS


Project owner:	Bajrang
consultant / engineer:	
contractor:	Manish pipes
Pipe Details - material: UP RESIN + ORTHO	
Total pipeline length (m):	600 mm Dia – 25 kilometer
Diameter DN min / max (mm):	
Pressure PN min / max (bar):	PN – 12, SN – 124 Kpa – B Class
Stiffness SN min / max (N/m2):	
joint types:	Bell & Spigot with Reka Ring
fittings used:	Bend/Flange
Installation Details:	
type:	
Ground Application	UNDER GROUND
Burial Depth	1.5 M
Project duration:	2012- 2013



DETAILS OF COMPLETED PROJECTS

Project : Process Water line in Cooling Tower in Power Project,
COASTAL Energy Power

Company Name: PAHARPUR Cooling Tower Ltd.

location	Coastal Energy Pvt. Ltd, Tuticorin, Mellamarudhur, TM	
Scope of EPP:	Design, Engineering, Supply & Supervision during Erection	
PO no & Date	10-21-0084/LOI Dt.	
	21/3/2012	
project value in	6 Cr	
Application:	Cooling Water	
Working pressure	N/A	
Type of project:	Cooling Water line	
demanded standards / specifications / approvals:		



6/4/2020

<i>chosen pipe system:</i>	GRP wound filament
<i>why our product?</i>	light weight corrosion resistance flow characteristics mech. properties high product life; fast and easy installation; economical; variable system/material; less maintenance as result of self cleaning effect

DETAILS OF COMPLETED PROJECTS

Project owner:	Coastal Energy
consultant / engineer:	N/A
contractor:	Paharpur
Pipe Details - material:	GRP
Total pipeline length (m):	Dia. 2600 mm/ 2100 mm/1800/1650/1500/1200/800 mm \36 m/160 m/ 160 m/ 127 m/ 145 m/138 m/ 1000 m
Diameter DN min / max (mm):	
Pressure PN min / max (bar):	PN:06,SN: C
Stiffness SN min / max (N/m2):	
joint types:	Butt & Wrap
fittings used:	Bend/ Flange/Reducer/ Tees
Installation Details:	
type:	
Ground Application	Under Ground & Above Ground
Burial Depth	3.8M
Project duration:	2012 – 2013



DETAILS OF COMPLETED PROJECTS



Project : CCPL Project
Company Name: Reliance Industries Limited

location	Jamnagar	
Scope of EPP:	Design, Engineering, Manufacturing, Testing & Supply of GRP Pipes, Laying, Hydro Testing Including civil work and all utility crossings.	
PO no & Date	XM4/7521411 Dt. 10-03-2014	
project value in	52412600	
Application:	Cooling water, raw water & treated water	
Working pressure	PN- 10	
Type of project:	WTP	
demanded standards / specifications / approvals:	ASTM D 2996	
		<p><i>chosen pipe system:</i> GRP wound filament</p> <p><i>why our product?</i> light weight corrosion resistance flow characteristics mech. properties high product life; fast and easy installation; economical; variable system/material; less maintenance as result of self cleaning effect</p>

6/4/2020

DETAILS OF COMPLETED PROJECTS

consultant / engineer:	DCPL Mumbai
contractor:	EPP
Pipe Details - material:	GRP
Total pipeline length (m):	24 km500 & 200
Diameter DN min / max (mm):	
Pressure PN min / max (bar):	PN-10
Stiffness SN min / max (N/m2):	
joint types:	Plain End
fittings used:	Bend, Reducer, Flange & Tee
Installation Details:	
Ground Application	Under Ground & Above Ground
Burial Depth	2.0 M
Project duration:	2014



DETAILS OF COMPLETED PROJECTS



Project : Gagwa – Phase - I, A2O Project - CCPL
Company Name: Reliance Industries Limited

location	Jamnagar, A2O Gagva Plant
Scope of EPP:	Design, Engineering, Testing & Supply, installation, erection and commissioning of PSTP- 30 KLD Capacity for Water Treatment Facility Project Phase-I, Gagva, Jamnagar.
PO no & Date	1J/XM4/7700717,31251753 Dt.23-08-2017,13-7-2017
Project value in	Rs. 100.89 Crores
Application:	Sewage Water
Type of project:	Package Sewage Treatment Plant



chosen pipe system:	CPVC Pipes and GRP Pipes
Why our product?	Oceanides’s Own developed Moving Bed Bio Reactor (MBBR) which degrades the Organic matter by almost 95% and nutrients by 98%.

COMPLETED SITE PHOTOS



6/4/2020

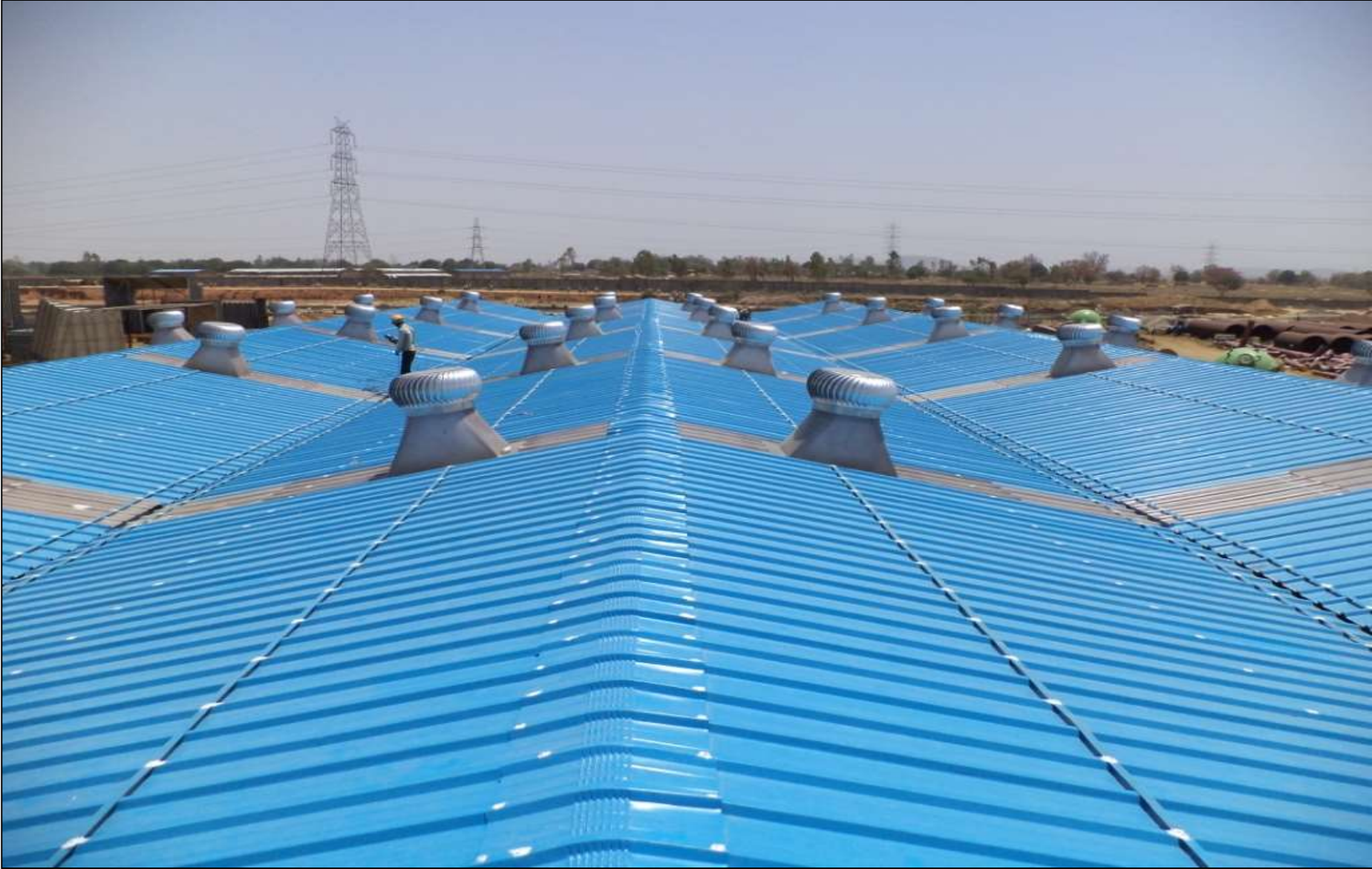
COMPLETED SITE PHOTOS



COMPLETED SITE PHOTOS



COMPLETED SITE PHOTOS



COMPLETED SITE PHOTOS



COMPLETED SITE PHOTOS



COMPLETED SITE PHOTOS



FRP ELECTRIC POLES



6/4/2020

COMPLETED SITE PHOTOS



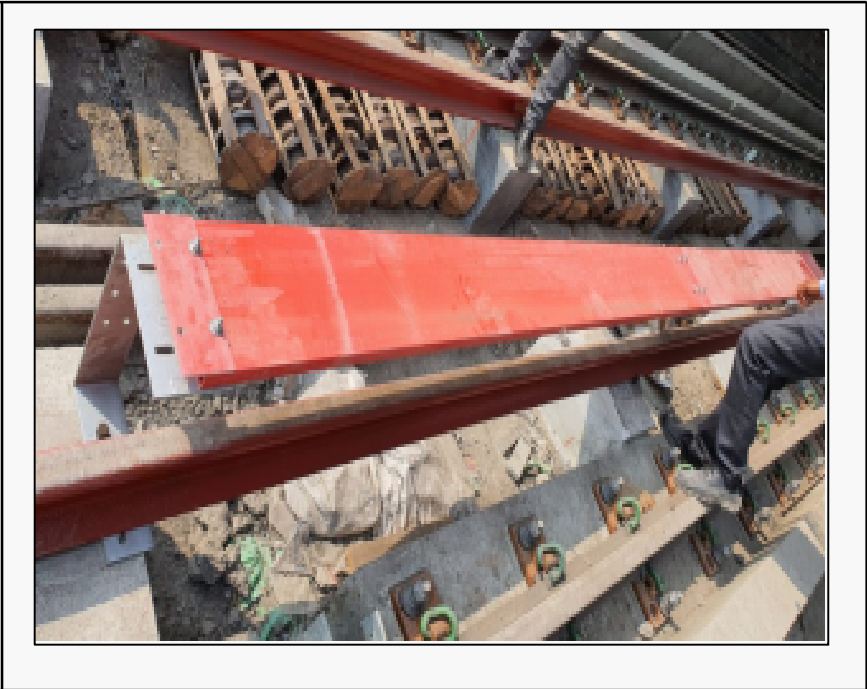
KOLKATA METRO RAIL PROJECT



COMPLETED SITE PHOTOS

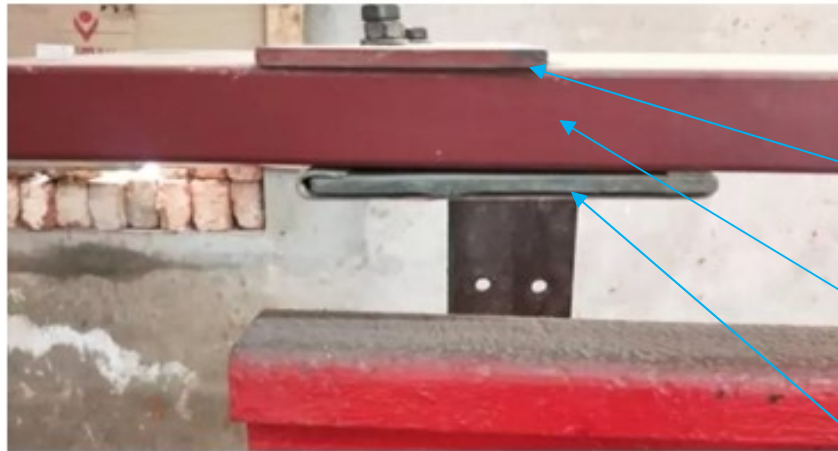


KOLKATA METRO RAIL PROJECT



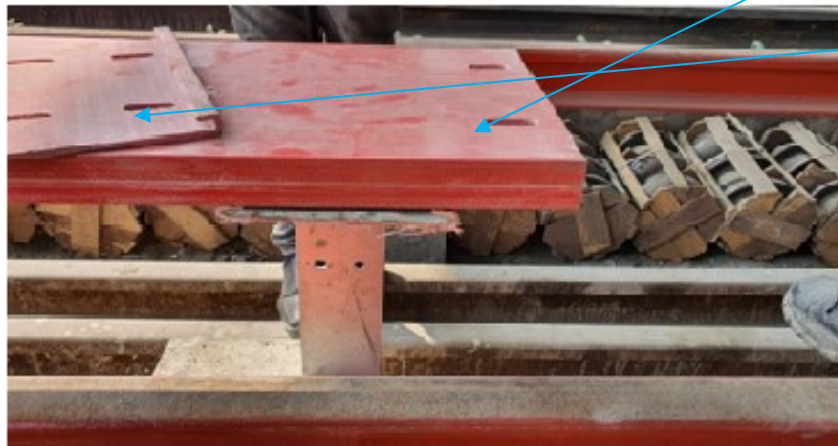
COMPLETED SITE PHOTOS

KOLKATA METRO RAIL PROJECT



Top Covering Plate

Shroud Box for Third Rail Protection



Covering Plat as a insulator for bottom support

Epoxy Shroud Box & It's Assembly

Shroud Box



C – Channel



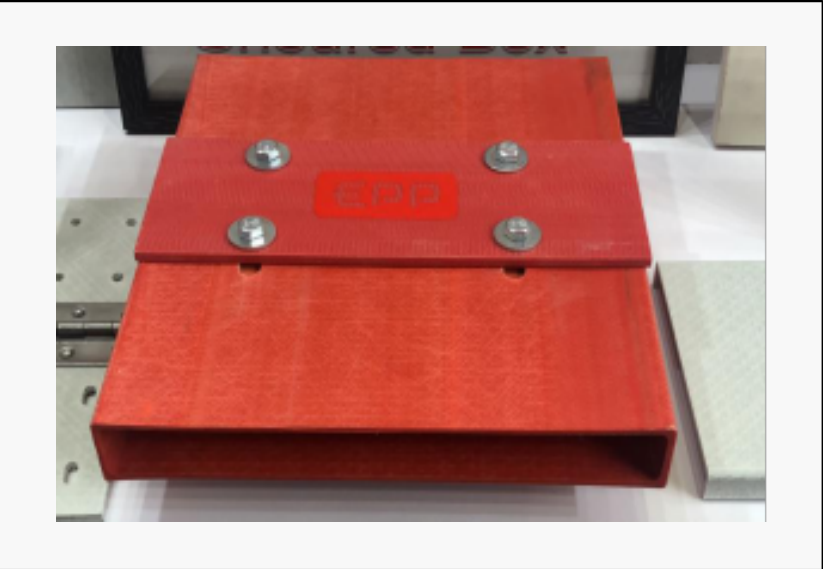
M12 – Fasteners Cap – (12 mm ID * 14 mm thk.)



Cover Plate



Assembly Drawing at Plant & Installation At Site:



CURRENT PROJECTS



1. NTPC THERMAL POWER PLANT, KHARGONE, MP.

Design, Engineering, Manufacturing, Testing & Supply of GRP Pipes including Laying, Hydro Testing of GRP/ DI/MS Pipes. Dia-900 mm/ 800 mm/ 700 mm dia- Total length- 82.50 KM.

2. Kansumra – Masitiya RWSS of GWSSB, Jamnagar

Including 5.0 MLD WTP, 10 LL ESR, 55 LL Under Ground Sump & 25 LL Under Ground Sump, Pump House, Cisterns, Pipeline - 24 KM etc.

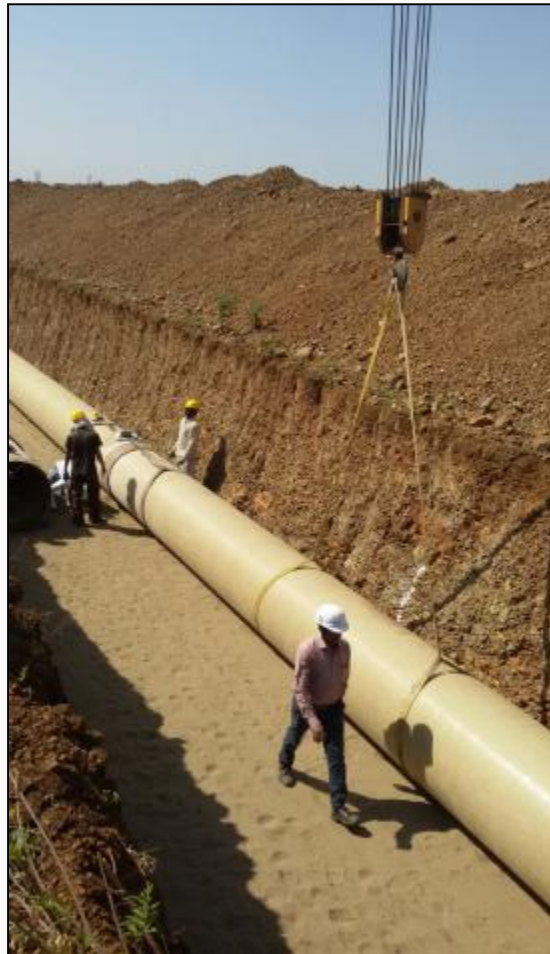
3. ETP Work at GFL, Dahej, GUJARAT

Construction of 3 MLD Effluent Treatment Plant with DM Plant at GFL, Dahej

4. Terminal Building Works, GMB, Gujarat

Design and Construction of Prefabricated Terminal Building for Passenger Ferry Service at Okha, Mandvi, Mundra, Rozi Port

CURRENT SITE PHOTOS



CURRENT PROJECTS



6/4/2020

CURRENT PROJECTS



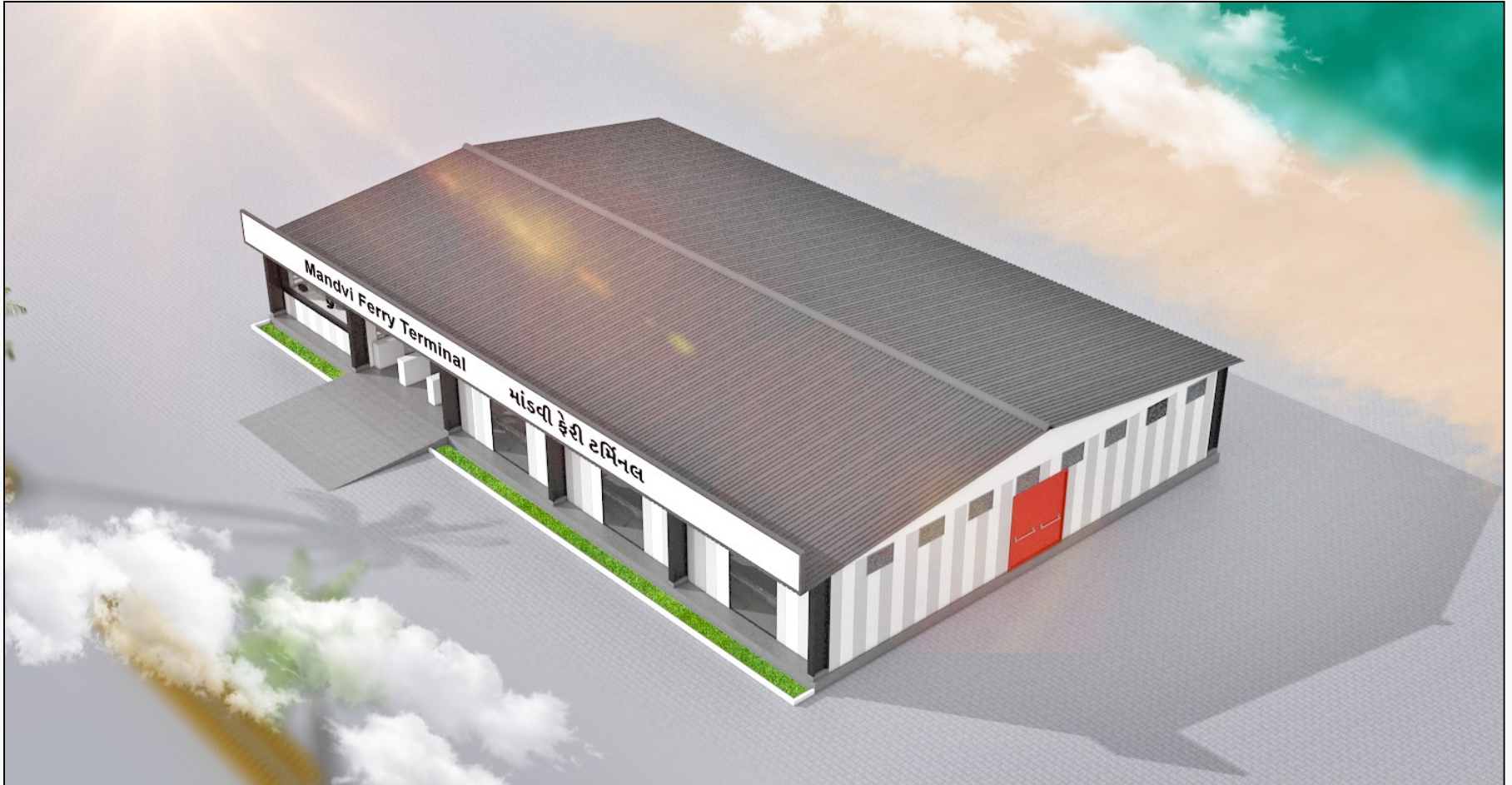
6/4/2020

CURRENT PROJECTS



6/4/2020

CURRENT PROJECTS



3D Visualization of **Mandvi Ferry Terminal**

CURRENT PROJECTS

Piling Works at GFL, Dahej



6/4/2020

Effluent Treatment Plant 1 MLD Under Construction - GFL Dahej



6/4/2020

Effluent Treatment Plant 1 MLD Under Construction - GFL Dahej



Effluent Treatment Plant 1 MLD Under Construction - GFL Dahej



6/4/2020

CURRENT PROJECTS

250 MM DI K-7 Pipeline



6/4/2020

CURRENT PROJECTS

900 MM DIA - MS Pipe



6/4/2020

CURRENT PROJECTS

900 MM DIA - MS Pipe



6/4/2020

CURRENT PROJECTS

900 MM DIA MS PIPE



CURRENT PROJECTS

900 MM DIA DI K-9 PIPE



CURRENT PROJECTS



900 MM DIA DI K-9 PIPE



Steel Binding work for Raft of 10 L / 15 M ESR at Jamnagar



ESR - 10 lakh ltr, 15 mt Height Under Construction



6/4/2020

Cistern Capacity of 30000 Ltr at Gordhanpar Village, Jamnagar



6/4/2020

MACHINERY DETAILS



S.No	Machinery Type	Capacity	Quantity
1	Excavator	Hitachi 210	2 Nos
5	Grader	135 HP	1 Nos
6	Grader	160 HP	1 Nos
8	Tractor Dozer	60-75 HP	1 Nos
9	Backhoe Loader	-	1 Nos
10	Hydra	12 ton	1 Nos
11	Hydra	16 Ton	1 Nos
12	Dumper		2 Nos
14	Transit Mixer	6 cum	1 Nos
15	Roller	10 Ton	2 Nos
17	Concrete Pump	30 cum	5 Nos
18	Soil Compactor		5 Nos
21	Trailor	40 Feet	4 Nos
22	Tractor Water Tanker	5 KL	2 Nos
29	Generator	10 to 100 Kva	5 Nos

6/4/2020

ATIKA INFRASTRUCTURE COMPANY					
Key Personnel					
Sl. No	Name	Qualification	Designation	Experience In Years	Remarks
1	N.V. Muralidhar Rao	BE - Civil & ME - Environmental	VP - Projects	37 years	
2	Shyam Lal Ram Murat Yadav	BE - Civil	AGM - Projects	22 years	
3	Jayraj Nair	BE - Civil	AGM - Projects	28 Years	
4	Manoj Kumar Tiwari	BE - Civil	Assistant Manager	10 years	
5	Hiren Gajjar	Tech	Sr. Engineer	10 Years	
6	Guddusinh Rajput	B.Tech	Planning Engineer	10 years	
7	Toshib Shabbir Ahmad	BE - Mech	Assistant Engineer	4 Years	
8	Dinesh Rameshwar Verma	BE - Civil	Assistant Engineer	4 years	
9	Bhawaniram Bisan Solanki	Diploma - Mech	Assistant Engineer	7 Years	
10	Ravindra Khasid	BBA	Assistant Manager - HR	20 Years	
11	Supantha Dutta	BE-Civil	Engineer	5 Years	
12	Prithviraj Makwana	BE- Civil	Fresher		

WORKS ON HAND



Sr. No.	Description	Value
1	Construction of 3 MLD ETP and DM Plant at GFL, Dahej	Rs. 9.28 Cr
2	Kansumra – Masitiya RWSS of GWSSB, Jamnagar (Including 5.0 MLD WTP, ESR, Under Ground Sump, Pump House, Cisterns, Pipeline etc.)	Rs. 7.77 Cr
3	Construction of Make Up Water Pipeline of 900 mm dia GRP/DI/MS of 85 KM Length – for NTPC Thermal Power Plant at Khargone, MP	Rs. 72.5 Cr
4	Design and construction of Prefabricated Terminal Building for Passenger Ferry Service at Okha, Mandvi, Mundra, Rozi Port	Rs. 11.50 Cr
5	Haridwar Rishikesh Dehradun Pipeline Project.	Rs. 6.5 Cr

COMPANY DETAILS



PARTICULAR

DETAILS

Name Of Company

Atika Infrastructure Company

Address

“MAAN” , 5, Saurashtra Kala Kendra, Near Raiya Telephone Exchange, Rajkot - 360 007, Gujarat, India.

Contact Person

Mr. Nishant Shah - 9099072534

PAN No.

ABLFA 6570 F

GST No.

24ABLFA6570F1ZG

Telephone No.

+91 2827 287059 / 60

FAX No.

+91 2827 287063

EMAIL ID:

info@atika.co.in, marketing@atika.co.in

THANK YOU